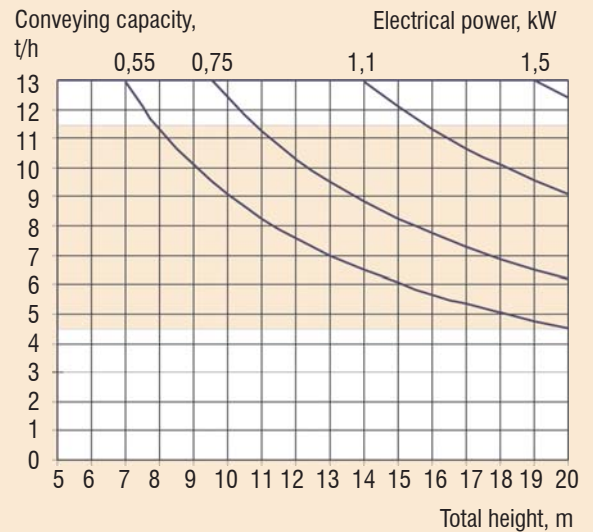




Bucket elevator installation in seed cleaning plants



PETKUS Bucket Elevators are used for the vertical transport of bulk material in the industry and agriculture, like cereals, oil seeds, pulses, as well as for the transport of products in powder form.

The optimal conveying capacity depends on the conveying speed, the number of buckets and the size of the buckets.

Recommended conveying capacity:

BE 100: 4,5 - 11,5 t/h

Conveying velocity (Auslegung: 0,75 t/m³):

- Fine seed up to 1,5 m/s
- Grain seed up to 1,8 m/s
- Grain and other bulk materials up to 2,5 m/s

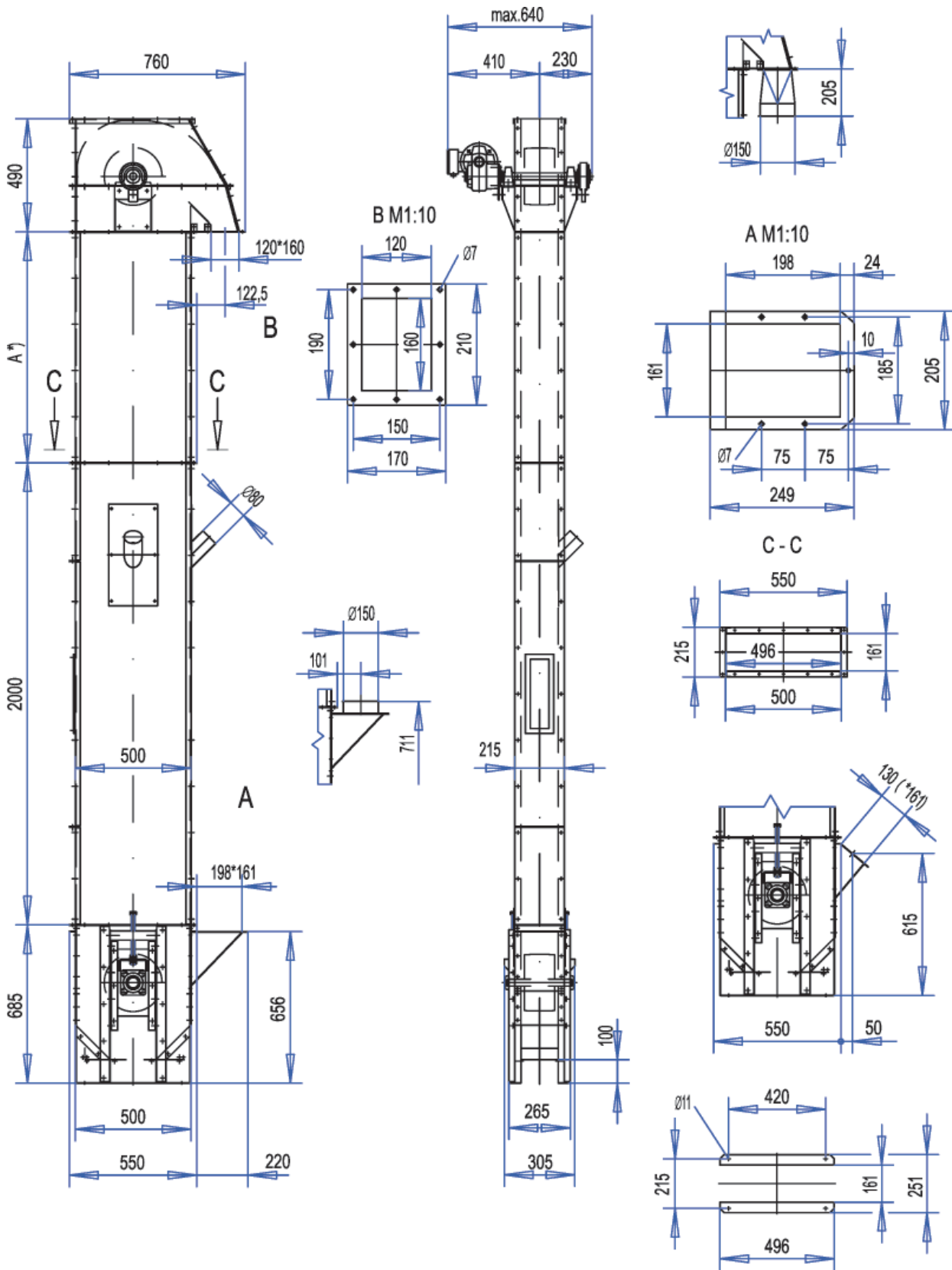
Standard equipment:

- Material galvanised steel sheet, elevator head and foot in 2 mm, elevator casings 1,5 or 2 mm, oil resistant rubber belt.
- Elevator head With cast belt disk, wear-resistant plastic plate, outlet, driven by a shaft mounted gear motor, back-run safety device located opposite to the driving motor.
- Elevator foot With wear-resistant plastic plate, tensioning device, one-sided intake, two slides for cleaning.
- Elevator-casing Standard casing 2,0 m length, Fitment casings 1,0 m, 0,5 m length, case for assembly and maintenance, incl. conveying belt with high capacity bucket system.

Additional equipment and options:

- Special equipment for the transportation of seeds,
- Overspeed monitor,
- Off-track running control,
- Slide for regulating the capacity,
- Various inlets and outlets, inlet hopper,
- Painted execution,
- Aspiration connection,
- Anti-dust-explosion hatches,
- Service platform,
- Plastic buckets,
- Infill hopper.

Bucket Elevator Type BE 100



Technical Alteration reserved.

4-10-1 02/2010