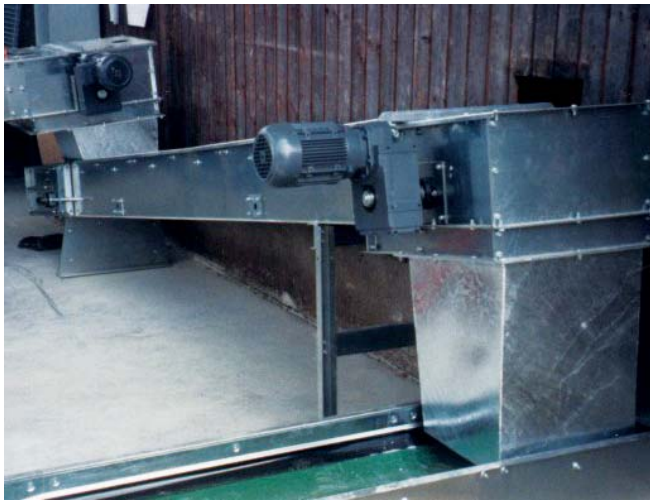


Troughed Belt Conveyor Type MB 300 / MB 400



PETKUS Troughed Belt Conveyors MB 300 and MB 400 are conveyors for the horizontal transport of bulk materials like:

- Seed,
- Grain,
- Malt,
- Bulk for the feed industry,
- and other bulk materials.

PETKUS Troughed Belt Conveyors are completely closed conveyors with a slide trough in a galvanised construction.

Standard equipment:

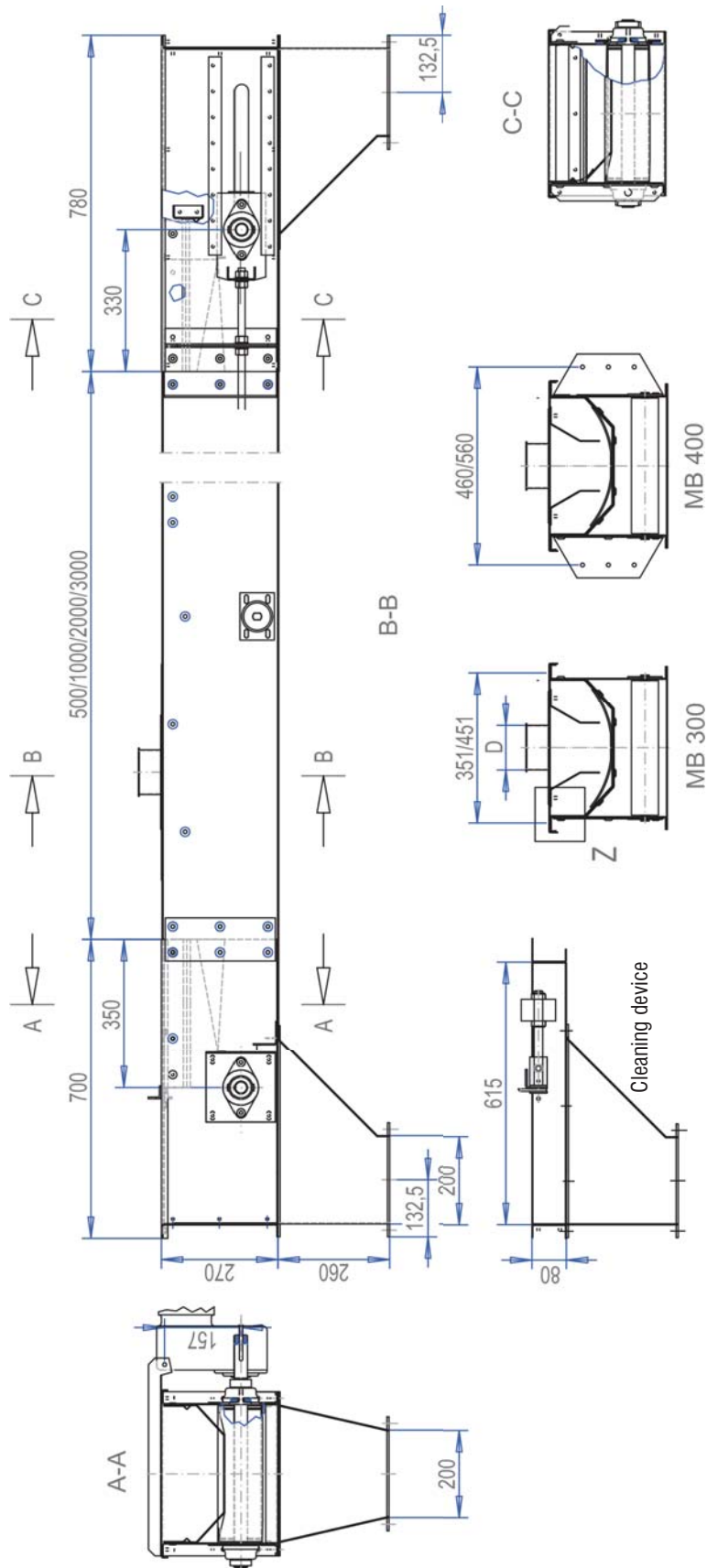
- Tension station,
- Inlet,
- Outlet,
- Material galvanised steel sheet, casing wall thickness 2-3 mm,
- Driving station, directly mounted gear motor,
- Conveying belt width, 300 mm and 400 mm,
- Available intermediate casing length pending from the total length of the conveyor (0,5m; 1,0m; 2,0m; 3,0m),
- Belt speed standard 1 m/s, Other belt speed based on customers requests can be offered.
- Conveying length up to 30 m,
- Carrying roller support in the subtrunk.

Additional and optional equipment:

- Overspeed monitor,
- Connection for aspiration,
- Discharge outlet with plate magnet,
- Painted in colour.

Type		MB 300	MB 400
Capacity (dimensioning 0,75t/m ³)	t/h	15	30
	m ³ /h	20	40
Belt width	mm	300	400
Conveying length up to:	m	30	30
Belt speed	m/s	1	1

Troughed Belt Conveyor Type MB 300 / MB 400



Technical Alteration reserved.