



The **PETKUS Troughed chain conveyors** are well suitable for the conveyance of bulk material in the agriculture and industry, like cereals, oil seeds, pulses, as well as for the transport of products in powder form.

The maximal achievable conveying length by using the standard equipment is 50 m. The increase of the conveying length is possible and needs to be calculated. The direction of the transport can be one-side, double side and reversible.

#### Standard Equipment:

- Material  
galvanized sheet steel, conveying bottom 4 - 5 mm, casing walls and top 2 mm, conveying chain made of coated flat steel with tempered bushes and bolts, cleaning plates in suitable distances.
- Driving station  
Drive by shaft mounted gear motor, with self-aligning bearings, outlet, pendulum flap prepared for the signal of blockage.
- Tension station  
with baffle plate, chain tensioning by tension springs.
- Conveying trough  
0,5/1,0/2,0/3,0 m Length of troughs, guide rails made of highly wear resistant plastic for a smooth running.
- Outlet slide - by hand, electrically or pneumatically.

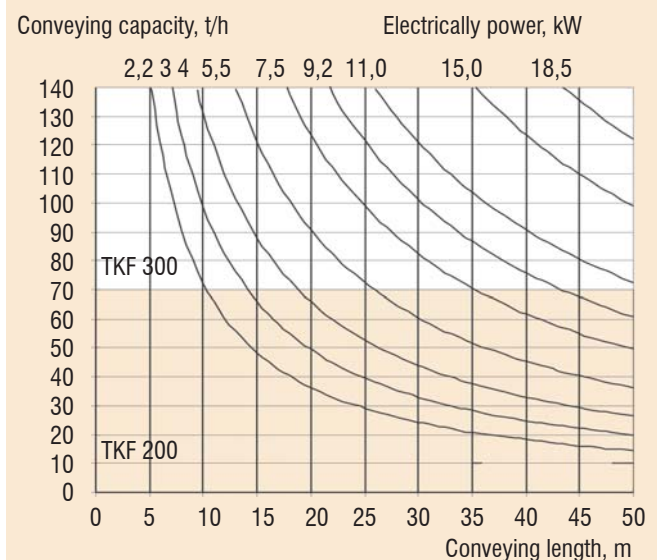
**Conveying capacity:** (Dimensioning: 0,75 t/m<sup>3</sup>)

TKF 200: up to 70 t/h

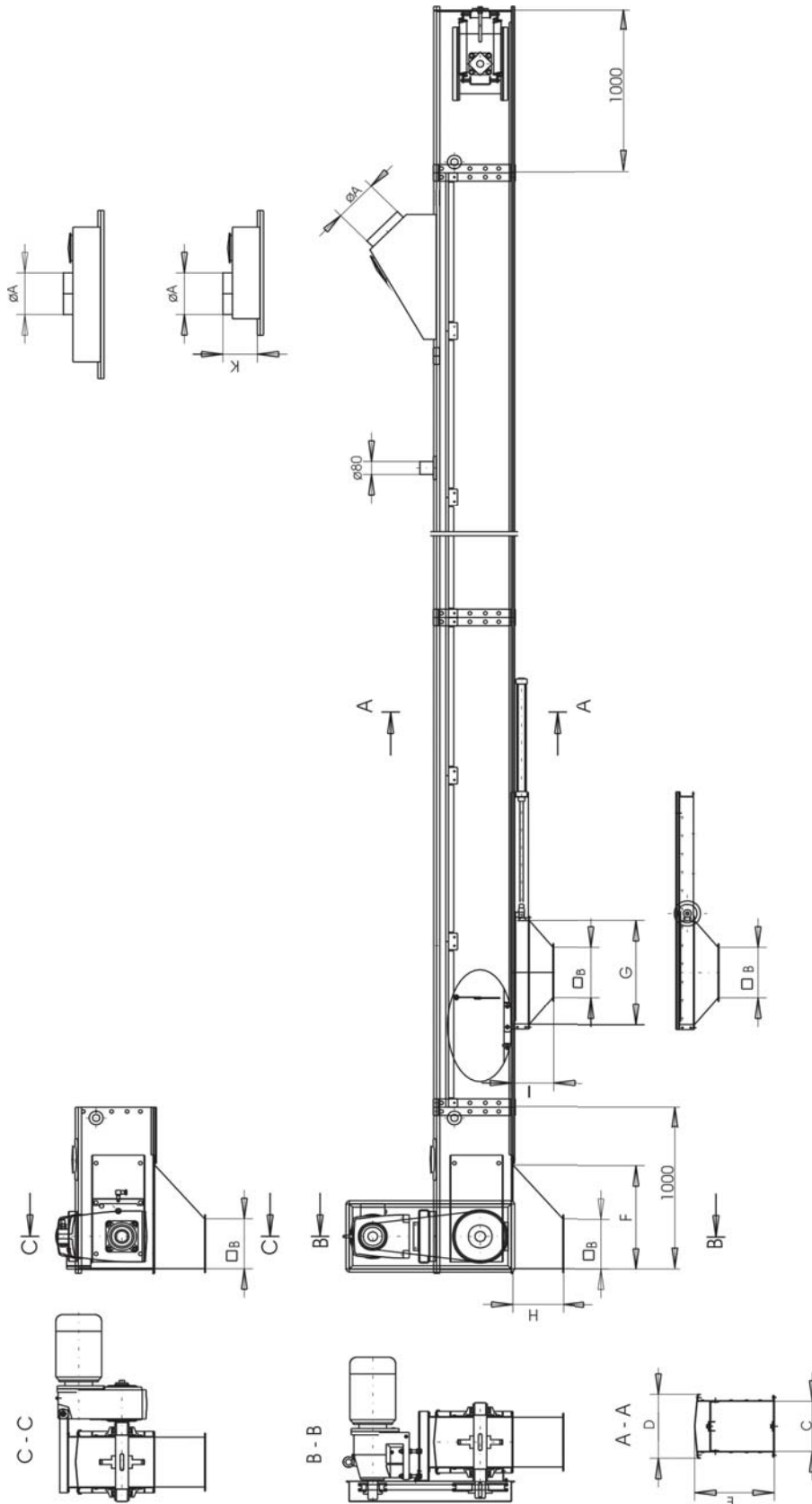
TKF 300: up to 140 t/h

#### Optional equipment:

- Wear resistant plate for the conveying bottom,
- Overspeed monitor,
- Side inlets for intake pits,
- Variator gear unit,
- Double channels for two sided conveyance,
- Intermediate bottom.



# Troughed Chain Conveyor Type TKF 200 / TKF 300



Type	A	B	C	D	E	F	G	H	I	K
TKF 200	mm	200	250	190	259	340	470	210	180	205
TKF 300	mm	250	302	384	460	625	630	300	235	205

Technical Alteration reserved.